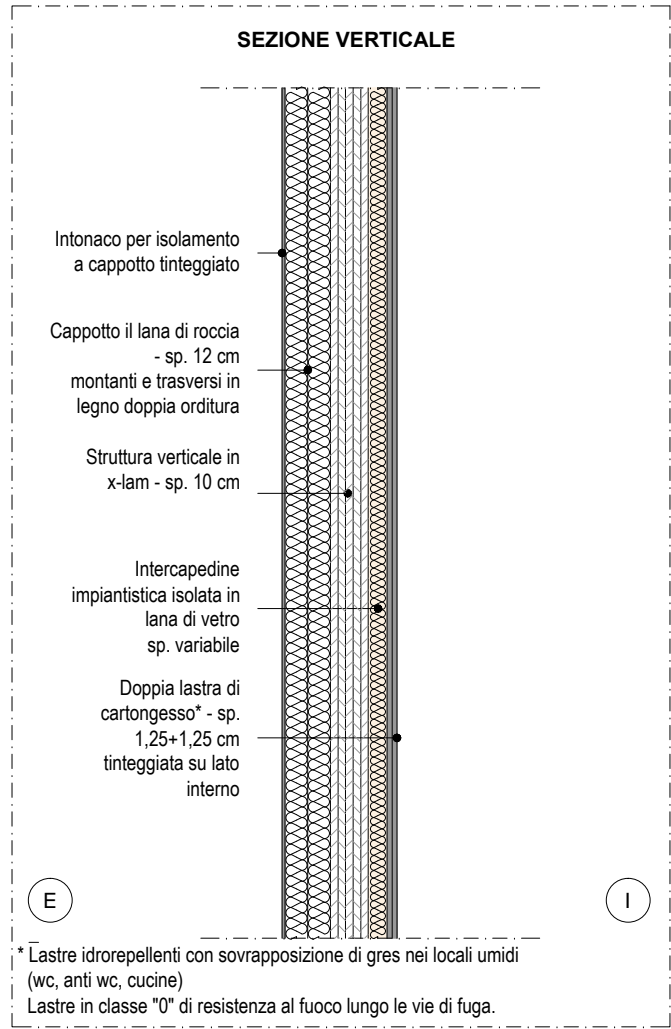
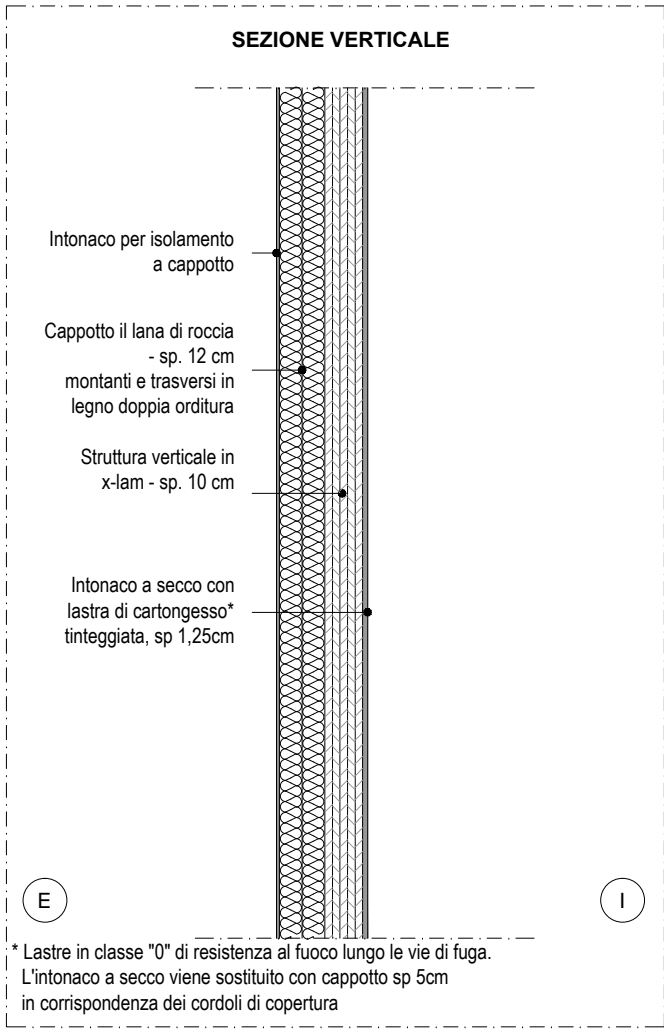


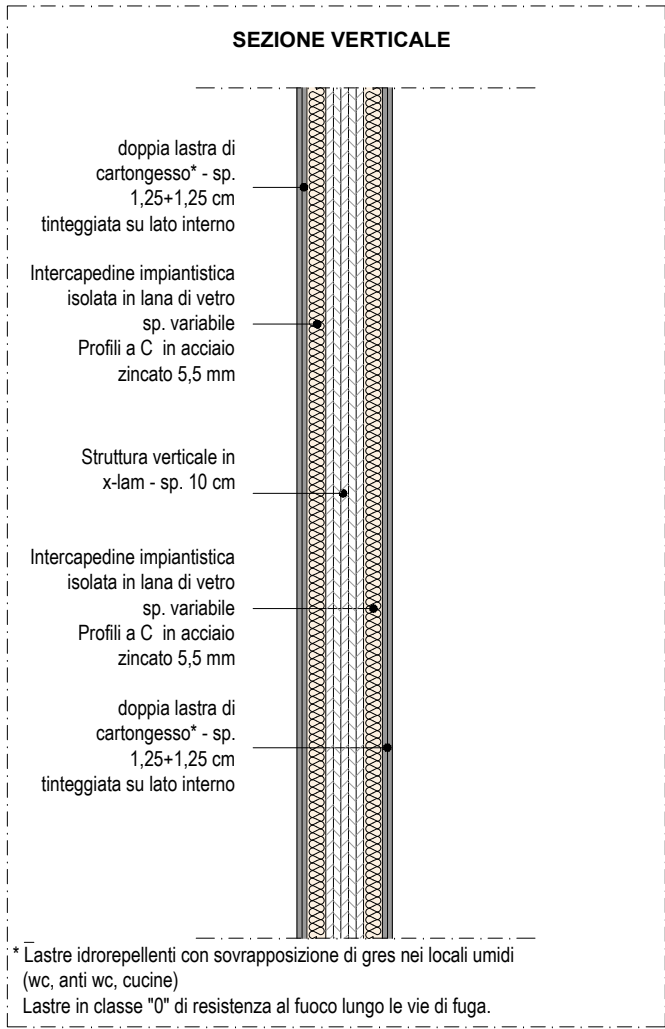
ME1 PARETE ESTERNA CON CONTROPARETE



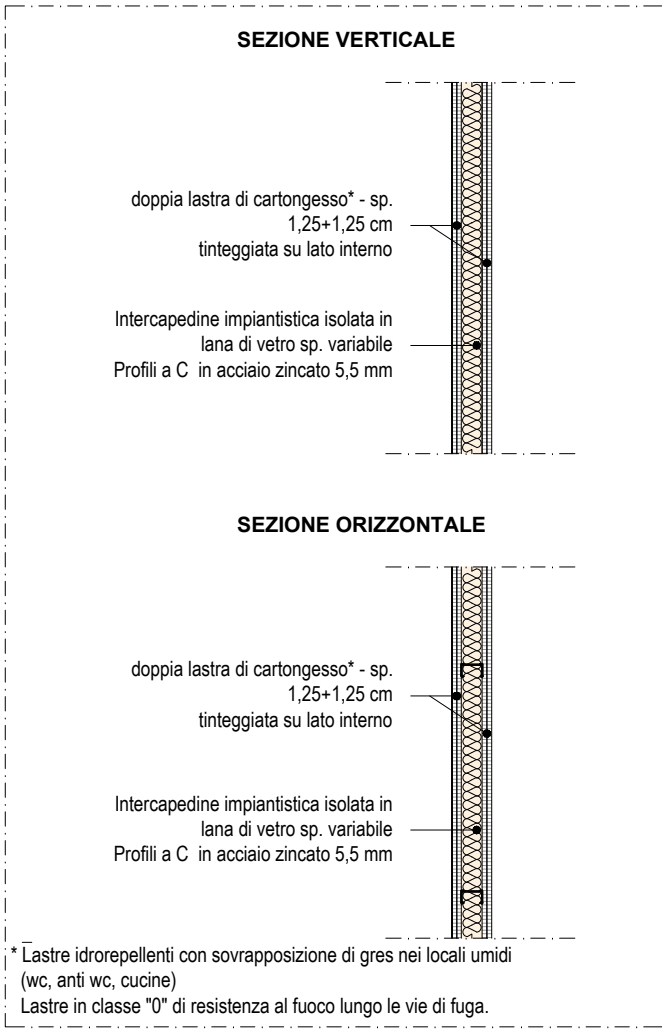
ME2 PARETE ESTERNA



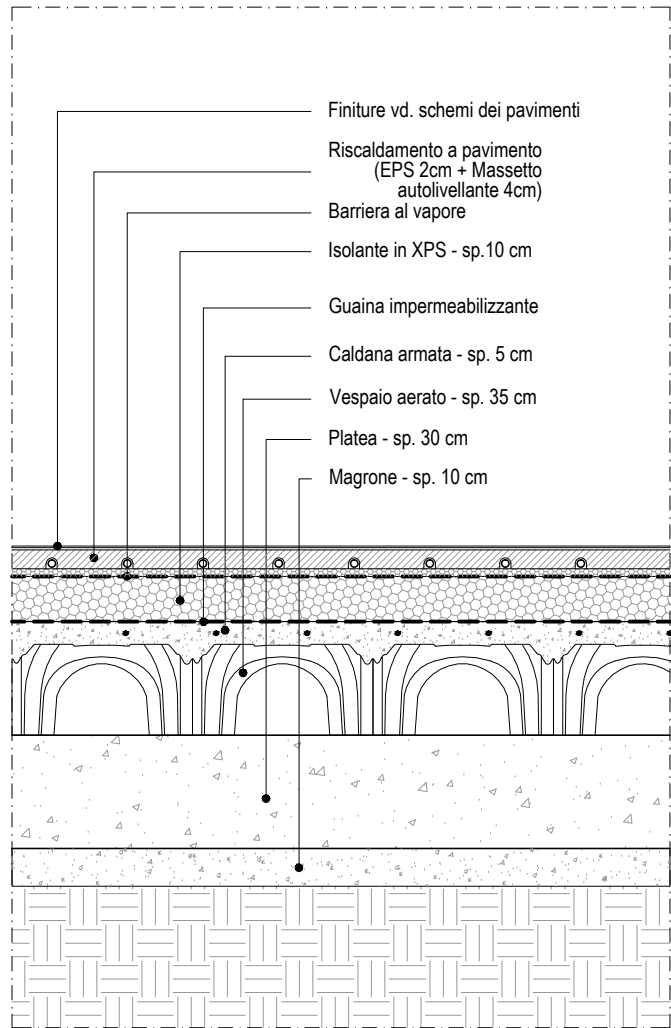
MI1 PARETE INTERNA CON CONTROPARETE



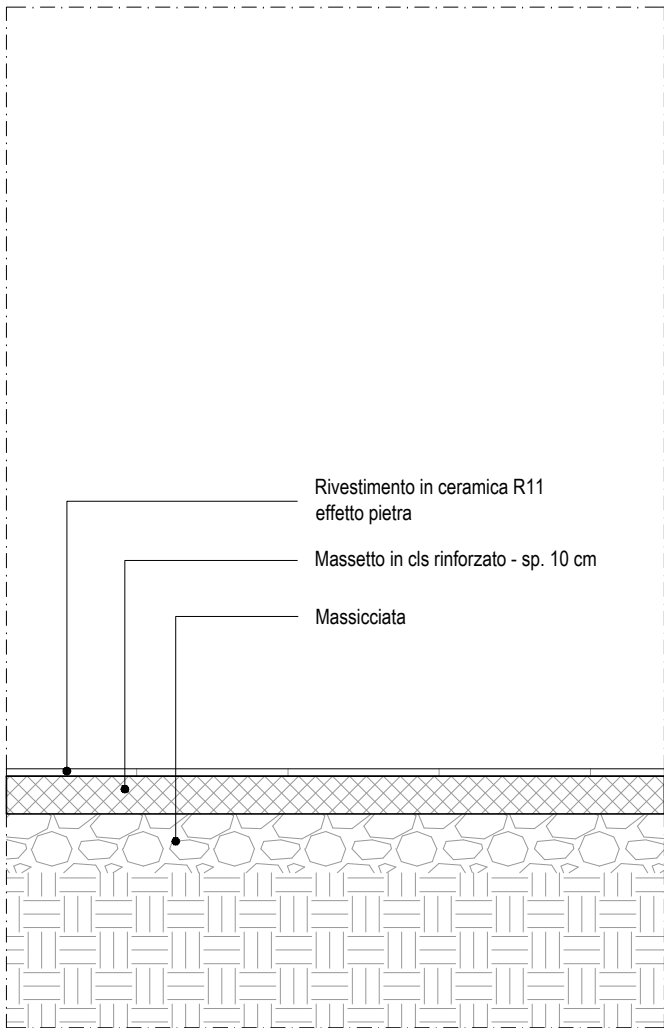
MI2 TRAMEZZO IN CARTONGESSO



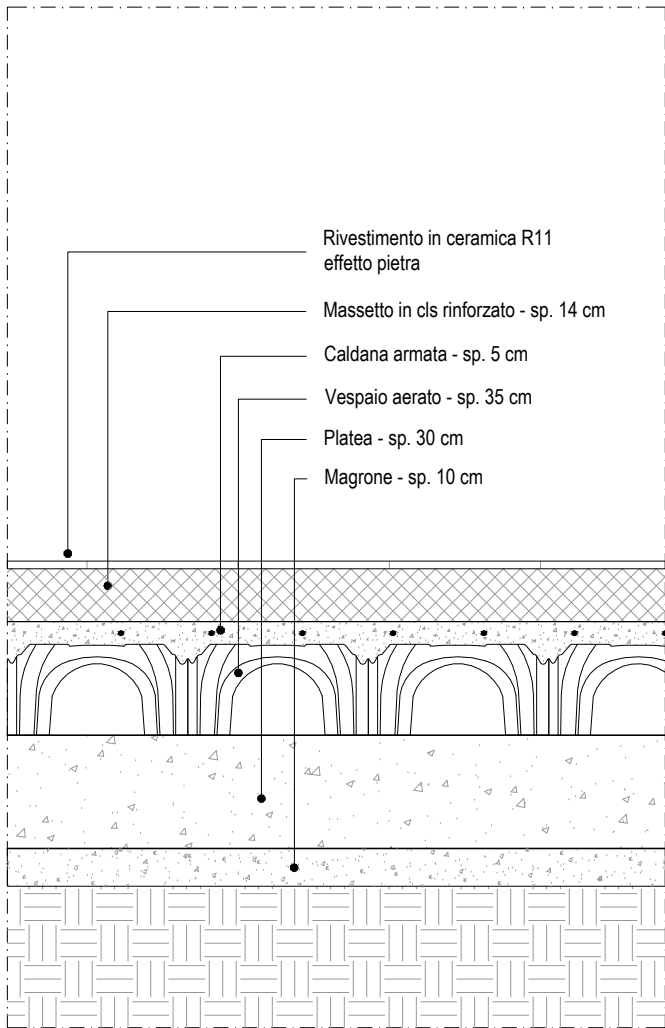
ST1 SOLAIO A TERRA



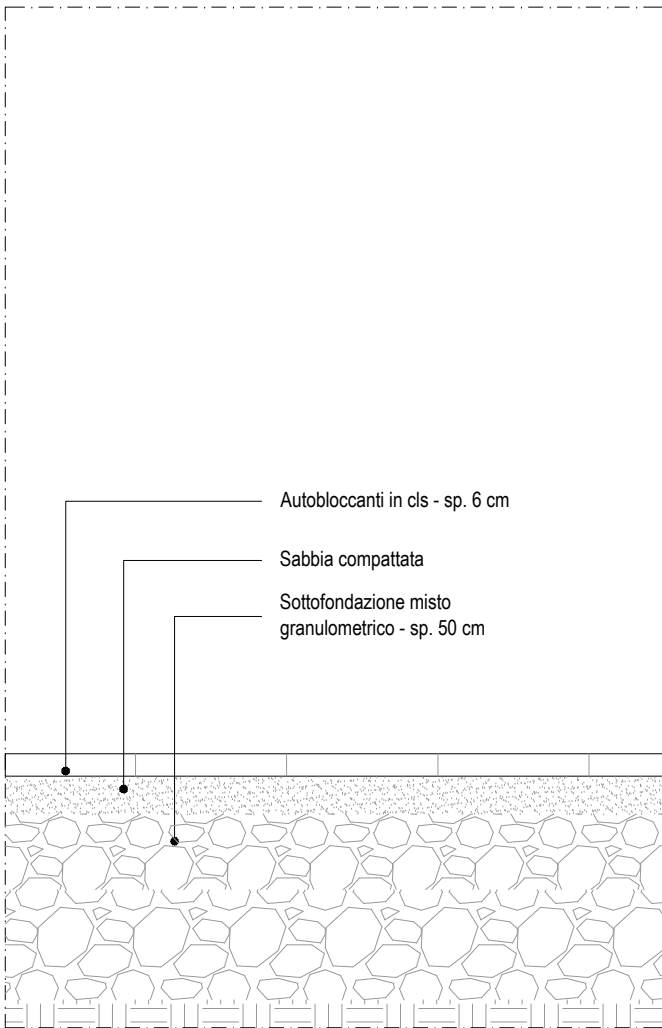
SE1 PIAZZALE ESTERNO



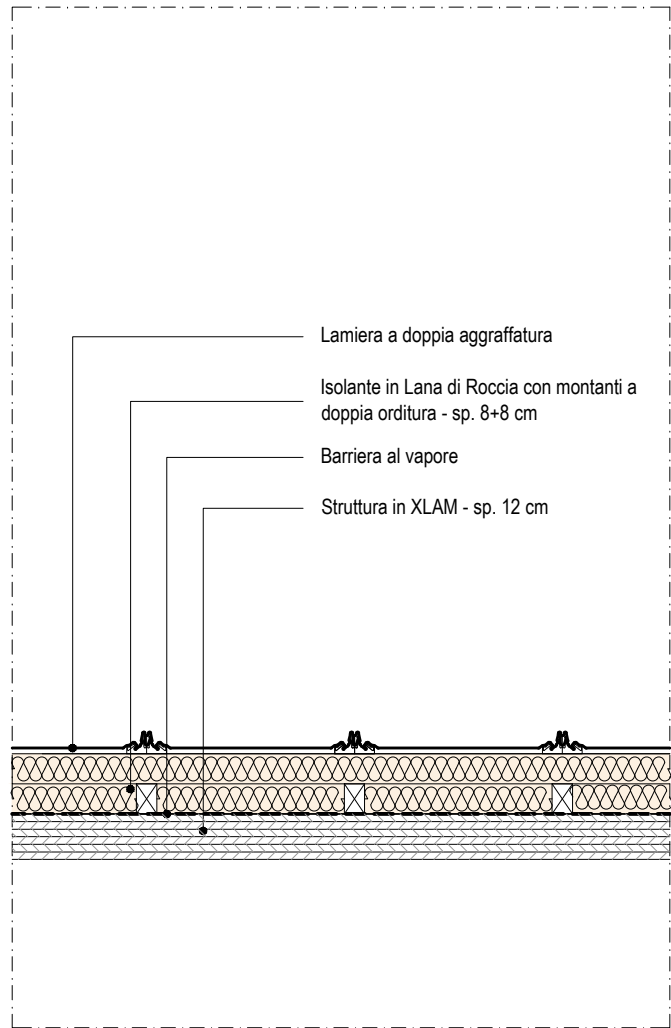
SE2 PIAZZALE ESTERNO SOTTO PENSILINA



SE3 PAVIMENTAZIONE PARCHEGGIO ESTERNO



SC1 COPERTURA



FOLIGNANO (AP)
REALIZZAZIONE DI MODULI SCOLASTICI
PER LA SCUOLA INFANZIA DI PIANE DI
MORRO DA REALIZZARE IN FOLIGNANO
CAPOLUOGO

PROGETTISTI: STUDIO TECNICO GRUPPO MARCHE
Contrada Potenza 11 62100 Macerata
P.iva 00141310433
Tel. +39 0733 492522
azienda certificata ISO 9001:2015 - ISO 14001:2015

COLLABORATORI/PROGETTO ARCHITETTONICO: Arch. Elisa Scalabroni
Ing. Jessica Iorri
Arch. Marco Marozzi

Progetto Definitivo

Architettura
ABACO STRATIGRAFIE -
PARETI E SOLAI

Repertorio/Posizione 2799/01
Data Giugno 2019
Verificato da AC

D-AA5-1

Scala		1:20
N.	Descrizione	Data
0	Prima Emissione	Giù 2019
1	Revisione	Lug 2019
2		
3		
4		

